

## 40x iA(intelligent Auto) H.265 PTZ Camera

Panasonic WV-S6131 captures the highest quality images automatically even in very challenging and fast-changing surveillance environments. Intelligent Auto (iA) monitors scene dynamics and motion to adjust key camera settings automatically in real-time reducing distortion such as motion blur on moving objects. New industry-leading 144dB dynamic range delivers balanced scene exposure in dynamic and extreme-backlit lighting environments. In addition, color night vision provides outstanding low-light performance with accurate color rendition and saturation from i-Pro's 1/3" sensor, rivaling the performance of costlier 1/2" sensor cameras in the market. Adopting H.265 Smart Coding technology, intelligently reduces bandwidth efficiency of up to 95%\* over H.264 for longer recording and less storage. Cameras out-of-the-box, use an encryption module standardized by FIPS Publication 140-2 for secure video streaming. \*Value in Advanced mode. It depends on the scene.

### Extreme image quality for evidence capturing under challenging conditions

- Long-distance vision with high power 40x zoom lens
- Sharp and clear image of fast moving vehicles with Intelligent Auto
- Outstanding low light performance in true color with low noise for night time applications
- Super Dynamic 144dB for backlit situation by headlights and shadows on the streets at night
- Long life Pan/Tilt gear mechanism

### Extreme bandwidth compression with new Panasonic H.265 Smart Coding

- Longer recording, less storage compared to H.264 based compression techniques
- New self-learning ROI\* encoding (Auto VIQS) dynamically detect motion areas to keep vehicles and human in good picture quality while lowering your bandwidth \*Region of Interest

### Extreme Data Security

- Full encryption SD card edge recording to keep your data safe
- FIPS140-2 CAVP compliant \*Using encryption module standardized by FIPS publication 140-2
- Full end-to-end system encryption with supported VMS and devices to protect from IP snooping/spoofing and detect data alteration

### Key Features

- Full-HD 1920x1080 60fps
- 40x optical zoom
- Durable Pan/Tilt gear mechanism
- iA (intelligent Auto)
- Extreme Super Dynamic 144dB
- Color night vision (0.001 to 0.015 lx)
- i-VMD License Bundled

### Industry examples

- Retail(Shopping mall)
- Airport
- Subway
- Casino
- Logistics



## Specifications

|                              |                                      |   |
|------------------------------|--------------------------------------|---|
| <b>Camera</b>                | Image Sensor                         | Approx. 1/2.8 type MOS image sensor   |
|                              | Minimum Illumination                 | Color : 0.015 lx, BW : 0.006 lx<br>(F1.6, Maximum shutter : Off (1/30s), AGC : 11)<br>Color : 0.001 lx, BW : 0.0004 lx<br>(F1.6, Maximum shutter : max. 16/30s, AGC : 11) <sup>*1</sup>         |
|                              | Intelligent Auto                     | On / Off  |
|                              | Shutter Speed                        | 1/30 Fix to 1/10000 Fix<br>*1/30 Fix to 2/120 Fix is available during 30 fps mode only.<br>*1/60 Fix is available during 60 fps mode only.  |
|                              | Super Dynamic <sup>2</sup>           | On / Off, the level can be set in the range of 0 to 31.   |
|                              | Dynamic Range                        | 144 dB (Super Dynamic : On)   |
|                              | Image Settings                       | Gain (AGC), White balance   |
|                              | Image Compensation                   | Adaptive black stretch, Back light compensation (BLC),<br>Fog compensation, High light compensation (HLC),<br>Digital noise reduction   |
|                              | Color/BW (ICR)                       | Off / On / Auto1 (Normal) / Auto2 (IR Light) / Auto3 (SCC)  |
|                              | Video Motion Detection (VMD)         | On / Off, 4 areas available   |
|                              | Intelligent VMD (i-VMD) <sup>3</sup> | Type 4 *Bundled License   |
|                              | Stabilizer <sup>3</sup>              | On / Off (available only in the 30 fps mode)  |
|                              | Privacy Zone                         | Filling / Pixelate / Off (up to 32 zones available)   |
|                              | Camera Title (OSD)                   | On / Off Up to 20 characters (alphanumeric characters, marks)   |
| <b>Lens</b>                  | Zoom Ratio                           | 40x Optical<br>60x HD Extra Optical Zoom (when resolution is 1280x720)  |
|                              | Digital (electronic) zoom            | 16x   |
|                              | Focal length                         | 4.25 mm – 170 mm (5/32 inches – 6-11/16 inches)   |
|                              | Maximum Aperture Ratio               | 1 : 1.6 (WIDE) – 1 : 4.95 (TELE)  |
|                              | Focus range                          | 3.0 m (9 ft 10-1/8 inches) – ∞  |
|                              | Angular Field of view                | [16 : 9 mode] Horizontal : 1.9 ° (TELE) – 66 ° (WIDE)<br>Vertical : 1.1 ° (TELE) – 39 ° (WIDE)<br>[4 : 3 mode] Horizontal : 1.4 ° (TELE) – 51 ° (WIDE)<br>Vertical : 1.1 ° (TELE) – 39 ° (WIDE) |
|                              | <b>Pan/tilt</b>                      | Panning Range   |
| Panning Speed                |                                      | Manual : Approx. 0.065°/s – 120°/s<br>Preset : Up to approx. 300°/s   |
| Tilting Range                |                                      | -25° to 205° (level-downward-level)   |
| Tilting Speed                |                                      | Manual : Approx. 0.065°/s – 120°/s<br>Preset : Up to approx. 300°/s   |
| Preset Positions             |                                      | 256 positions   |
| Auto Mode                    |                                      | Auto track <sup>3</sup> / Auto pan/ Preset sequence/ Patrol   |
| Self Return                  |                                      | 10 s / 20 s / 30 s / 1 min / 2 min / 3 min / 5 min / 10 min / 20 min / 30 min / 60 min  |
| <b>Browser GUI</b>           | Camera Control                       | Pan/Tilt, Zoom, Focus, Auto mode, Brightness, Preset, AUX, Rec. on SD, Log, Viewer software   |
|                              | Audio                                | Mic (Line) input : On / Off Volume adjustment : Low / Middle / High<br>Audio Output : On / Off Volume adjustment : Low / Middle / High  |
|                              | GUI / Setup Menu Language            | English, Italian, French, German, Spanish, Portuguese, Russian, Chinese, Japanese   |
|                              | <b>Network</b>                       | Network IF  |
| Resolution                   |                                      | <b>*2 mega pixel [16 : 9] (30/60 fps)</b><br>1920x1080 / 1280x720 / 640x360 / 320x180<br><b>*3 mega pixel [4 : 3] (30 fps)</b><br>2048x1536 / 1280x960 / 800x600 / VGA / 400x300 / QVGA         |
| H.265/ H.264<br>JPEG (MJPEG) |                                      | Constant bit rate / VBR / Frame rate / Best effort<br>*Used by super resolution techniques  |
| H.265/<br>H.264 <sup>4</sup> |                                      | Transmission Mode<br>Unicast / Multicast  |
| JPEG                         |                                      | Image Quality<br>10 steps   |

|                          |   |   |
|--------------------------|---|---|
| <b>Network</b>           | Smart Coding  | <b>Smart Facial Coding<sup>3</sup></b> : On(Smart Facial Coding)/ On(AUTO VIQS)/ Off<br>*Smart Facial Coding is only available with Stream(1).<br><b>GOP(Group of pictures) control</b> : On(Advanced) <sup>7</sup> / On(Mid)/ On(Low)/ Off<br>*On(Advanced) is only available with H.265.  |
|                          | Audio Compression   | G.726 (ADPCM) : 16 kbps / 32 kbps<br>G.711 : 64 kbps<br>AAC-LC <sup>5</sup> : 64 kbps / 96 kbps / 128 kbps  |
|                          | Audio transmission mode   | Off / Mic (Line) input / Audio output / Interactive (Half duplex) /<br>Interactive (Full duplex)  |
|                          | Supported Protocol  | IPv6 : TCP/IP, UDP/IP, HTTP, HTTPS, RTP, FTP, SMTP, DNS, NTP,<br>SNMP, DHCPv6, MLD, ICMP, ARP, IEEE 802.1X, DiffServ<br>IPv4 : TCP/IP, UDP/IP, HTTP, HTTPS, RTSP, RTP, RTP/RTCP, FTP,<br>SMTP, DHCP, DNS, DDNS, NTP, SNMP, UPnP, IGMP, ICMP,<br>ARP, IEEE 802.1X, DiffServ  |
|                          | Maximum concurrent access number  | Up to 14 users (Depends on network conditions)  |
|                          | SDXC/SDHC/SD<br>Memory Card (Option)  | H.265 / H.264 recording :<br>Manual REC / Alarm REC (Pre/Post) / Schedule REC /<br>Backup upon network failure<br>JPEG recording :<br>Manual REC / Alarm REC (Pre/Post) / Backup upon network failure<br>Compatible SDXC/SDHC/SD Memory Card :<br>Panasonic 2 GB, 4 GB*, 8 GB*, 16 GB*, 32 GB**, 64 GB**, 128 GB**<br>256 GB** model<br>*SDHC card, **SDXC card (except miniSD card and microSD card) |
|                          | Mobile Terminal Compatibility   | iPad / iPhone, Android™ mobile terminals  |
| <b>Alarm</b>             | Alarm Source  | 3 terminals input, VMD alarm <sup>6</sup> , Command alarm, Audio detection alarm, Auto track alarm  |
|                          | Alarm Actions   | SDXC/SDHC/SD memory recording, E-mail notification, HTTP alarm notification,<br>Indication on browser, FTP image transfer, Panasonic protocol output  |
| <b>Input/<br/>Output</b> | Audio Input   | ø3.5 mm stereo mini jack (monaural input)<br>Input impedance: Approx. 2 kΩ (unbalanced)<br>(Applicable microphone: Plug-in power type)<br>Supply voltage: 4.0 V ±0.5 V  |
|                          | Audio Output <sup>7</sup>   | ø3.5 mm stereo mini jack (monaural output)<br>Output impedance : Approx. 600 Ω (unbalanced)   |
|                          | External I/O Terminals  | ALARM IN1(Alarm input 1/ Black & white input/ Auto time adjustment input),<br>ALARM IN2(Alarm input 2/ ALARM OUT), ALARM IN3(Alarm input 3/ AUX OUT)(x1 for each)   |
| <b>General</b>           | Safety  | UL (UL60950-1), c-UL (CSA C22.2 No.60950-1), CE, IEC60950-1   |
|                          | EMC   | FCC (Part15 ClassA), ICES003 ClassA, EN55032 ClassB, EN55024  |
|                          | Power Source and<br>Power Consumption   | DC12 V 1 A, Approx. 12 W<br>PoE(IEEE802.3af compliant) DC48 V 250 mA, Approx. 12 W (Class0 device)  |
|                          | Ambient Operating<br>Temperature  | -10°C to +50°C (14 °F to 122 °F)  |
|                          | Ambient Operating Humidity  | 10 to 90 % (no condensation)  |
|                          | Dimensions  | Maximum ø185 mm x 214 (H) mm {ø7-9/32 inches x 8-7/16 inches (H)}<br>(including the decorative covers)  |
|                          | Mass (approx.)  | Approx. 1.74 kg (3.84 lbs)<br>Including camera mount bracket, decorative cover : Approx. 240 g (0.53 lbs)   |
| Finish                   | Camera : ABS resin (Coating color : Black)<br>Decorative cover : ABS resin (Resin color : Sail white) |   |

\*1 Converted value

\*2 Super Dynamic function is automatically set off on 60 fps mode.

\*3 Stabilizer, Auto track, Smart Facial Coding, i-VMD, can not be used at the same time.

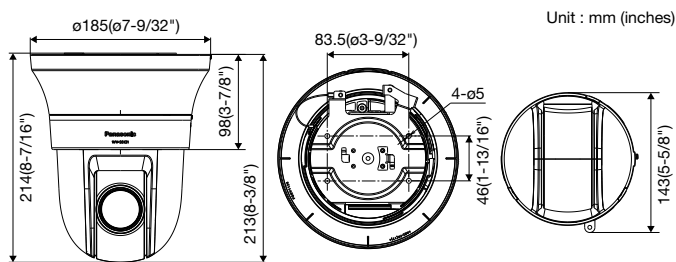
\*4 Transmission for 4 streams can be individually set.

\*5 When recording audio on an SD memory card, only use AAC-LC (Advanced Audio Coding - Low Complexity).

\*6 Including alarms from Plug-in Software

\*7 The audio output can be switched to the monitor output. Refer to the Operating Instructions on the provided CD-ROM for descriptions of how to switch the output.

## Appearance



### Trademarks and registered trademarks

- iPad and iPhone are trademarks of Apple Inc., registered in the U.S. and other countries.
- Android is a trademark of Google LLC.
- ONVIF and the ONVIF logo are trademarks or registered trademarks of Onvif Inc.
- All other trademarks identified herein are the property of their respective owners.

### Important

- Safety Precaution : Carefully read the Important Information, Installation Guide and operating instructions before using this product.
- Panasonic cannot be responsible for the performance of the network and/or other manufacturers' products used on the network.

- Masses and dimensions are approximate. • Specifications are subject to change without notice.

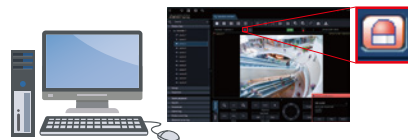
DISTRIBUTED BY :

## Bundled License

### Plug-in Software for i-VMD

i-VMD is possible to detect objects in the specified area by advanced video analysis technology.

i-VMD : Intruder Detection, Loitering Detection, Direction Detection, Scene Change Detection, Object Detection, Cross Line Detection



Notification sent to the monitoring screen

## Optional Accessories

### Mount Bracket / Dome Cover

|   |  |   |  |  |
|---|--|---|--|--|
| Ceiling<br>Mount Bracket<br><b>WV-Q105A</b> | Ceiling Mount Bracket<br>(Embedded)<br><b>WV-Q126A</b> | Wall<br>Mount Bracket<br><b>WV-Q119</b> | Dome Cover<br>(Smoke type)<br><b>WV-CS5S</b> | Dome Cover<br>(Clear type)<br><b>WV-CS5C</b> |
|   |  |   |  |  |

\*This catalog is provided for all over the world. Some accessories may not be available in some countries.

# Panasonic

<https://security.panasonic.com>

<https://www.facebook.com/Panasonicnetworkcamera/>

(2A-193BA)