

# X|PMB

The X Stream Designs Pole Mount Bracket with Leveling Plate serves all enclosure models to securely mount to pole sizes of 1" diameter and larger. The X|PMB is manufactured from .125" thick 3003 aluminum sheet metal, powder coated in white UV resistant materials and comes with the leveling plate and stainless steel hardware.



***SIMPLY THE WORLD'S MOST INNOVATIVE CAMERA ENCLOSURE SYSTEM***

## BUILT FOR THE ELEMENTS

- › Manufactured from .125" thick 3003 aluminum sheet metal
- › Powder coated in white, UV-resistant materials

## SECURELY MOUNT TO A VARIETY OF POLES

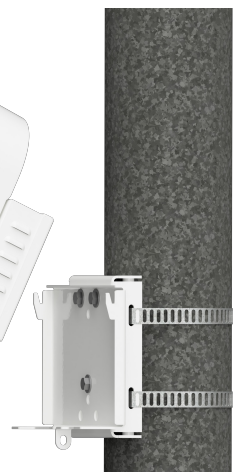
- › Mounts to pole sizes of 1" diameter and larger
- › Use the sidewall pole strap slots for pole diameters of 2" or larger
- › For pole diameters under 2", it is suggested to use the face pole strap slots

## ANGLE CORRECTION MADE EASY

- › The leveling plate comes standard with all pole mount brackets and includes the required stainless steel hardware
- › Use on top of the pole mount bracket:
  - Poles leaning backwards
  - Tapered poles
- › Use on the bottom of the pole mount bracket:
  - Poles leaning forward

## WORKS WITH ALL ENCLOSURE MODELS

- › X|Clear, X|Rain, X|Heat, X|Mod:  
The polycarbonate wall mount bracket included with these models mounts to the X|PMB pole mount bracket with the supplied stainless steel hardware
- › X|Cold model enclosure system:  
The metal wall mount bracket that ships with the X|Cold model enclosure system mounts to the X|PMB pole mount bracket with the supplied stainless steel hardware



***EXPERIENCE THE CLEAR IMAGE DIFFERENCE™***

## SPECIFICATIONS

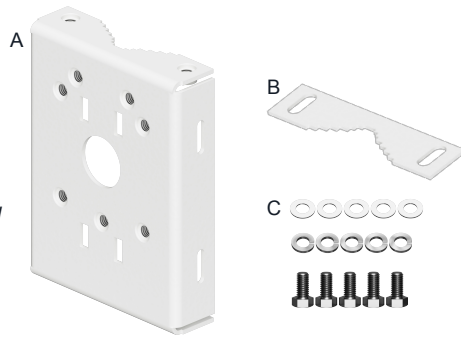
### INCLUDED IN THE BOX:

- X|PMB (A)
- X|PMB Leveling Plate (B)
- Installation Hardware (C)
  - 5x -  $\frac{3}{16}$ -16 x 1" Stainless Steel Bolts
  - 5x -  $\frac{3}{16}$  Stainless Steel Washers
  - 5x -  $\frac{3}{16}$  Stainless Steel Lock Washers

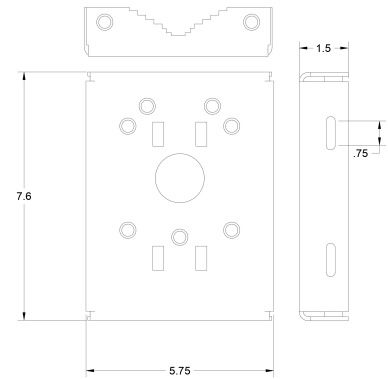
*Note: Pole Strapping Materials NOT provided*

### SHIPPING DIMENSIONS / WEIGHT

- 7"L x 9.5"W x 2"H - 2.5lbs

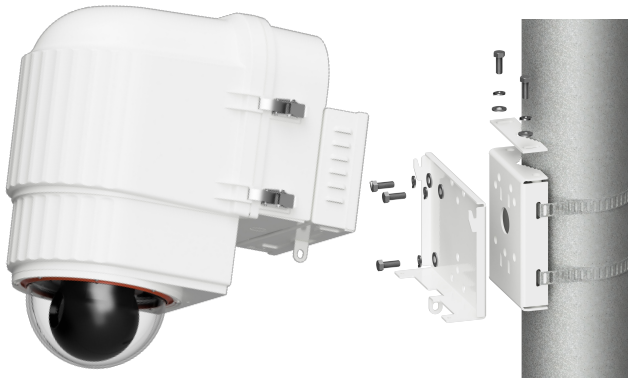


## X|PMB DIMENSIONS

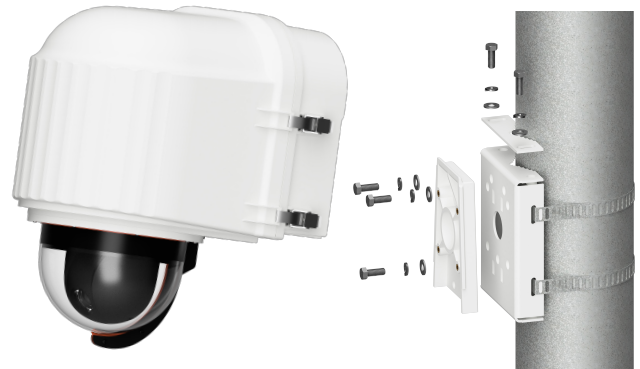


## COMPATIBLE MOUNTING BRACKETS

### X|COLD MOUNTING BRACKET

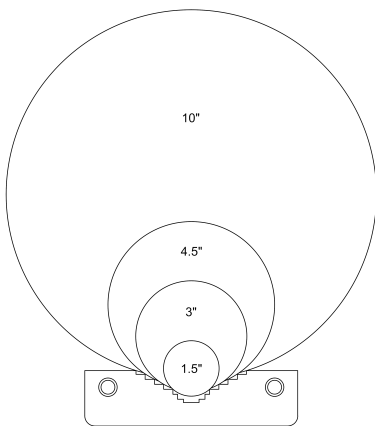


### X|SERIES MOUNTING BRACKET



## POLE DIAMETERS

The X|PMB is compatible with all poles with a diameter of 1-inch or larger:



## POLE STRAPS

### POLE STRAPPING MATERIALS ARE NOT PROVIDED WITH X|PMB

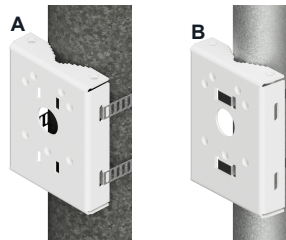
Purchase the optional X|SS-Polestraps accessory or supply your own pole strapping materials.

#### POLES OVER 2" DIAMETER

- Use the sidewall pole strap slots (A)

#### POLES UNDER 2" DIAMETER

- Use the face pole strap slots (B)



## X|SS-POLESTRAPS

X Stream Designs, Inc. recommends using our stainless steel X|SS-POLESTRAPS as your pole strapping materials:



*Note: Specify pole diameter when ordering*

## MORE ENCLOSURE UPGRADES / ACCESSORIES / OPTIONS

- X|DC-INPUT - 10-60VDC Input Power for Solar Installations
- X|AUX-RESERVOIR - External Auxiliary Fluid Reservoir
- X|INSULATE - Open Cell Silicone Foam Radiant Heat Shielding
- X|PMB - Pole Mount Adapter with Leveling Plate
- X|EXT-TEMP - External Temperature Probe
- X|HALF-SHELF - Accessory Shelf
- X|HIGH-CFM - High CFM Fans
- X|NVR - i3, i5 or i7 Processor Option
- X|50WH - 50 Watts Internal Heating Element



sales@xstreamdesigns.com  
xstreamdesigns.com  
858.768.2992

US Patents US8567963B1 • USD744570S1

**EXPERIENCE THE CLEAR IMAGE DIFFERENCE™**